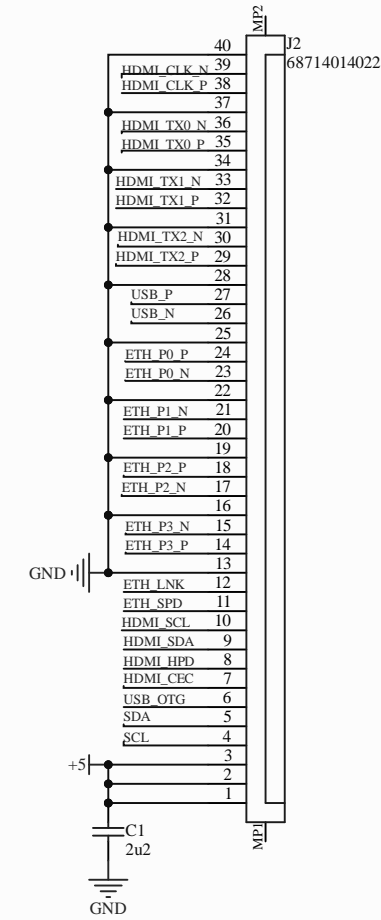
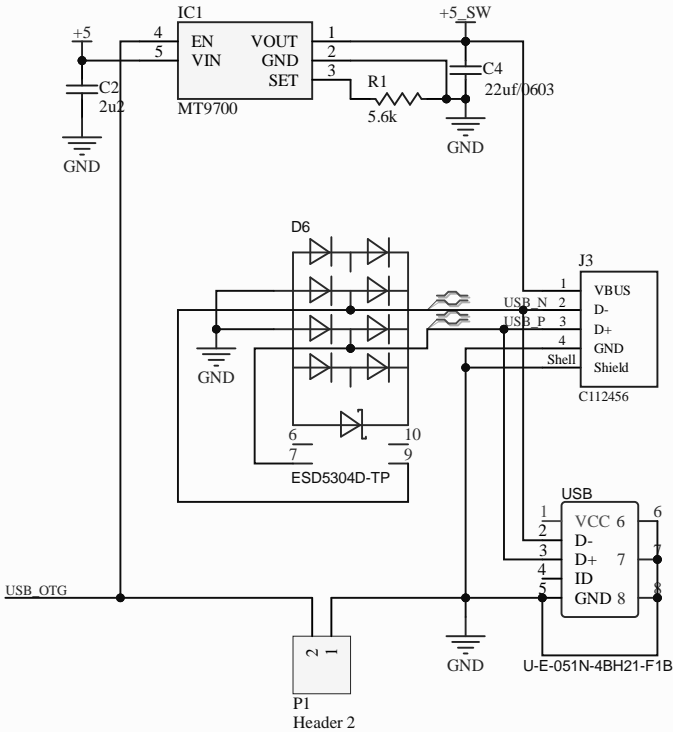


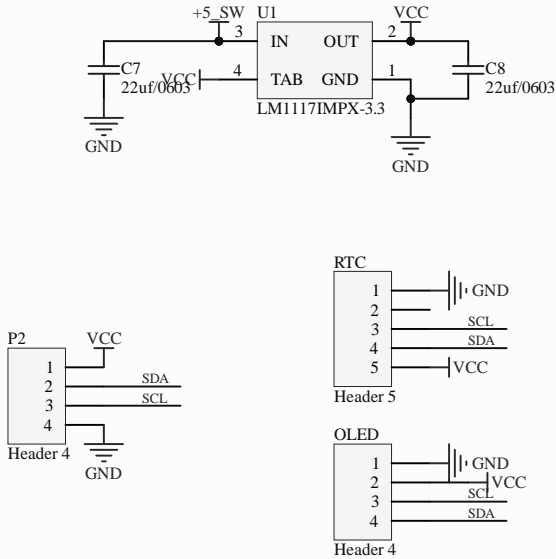
PiStorm32 IO



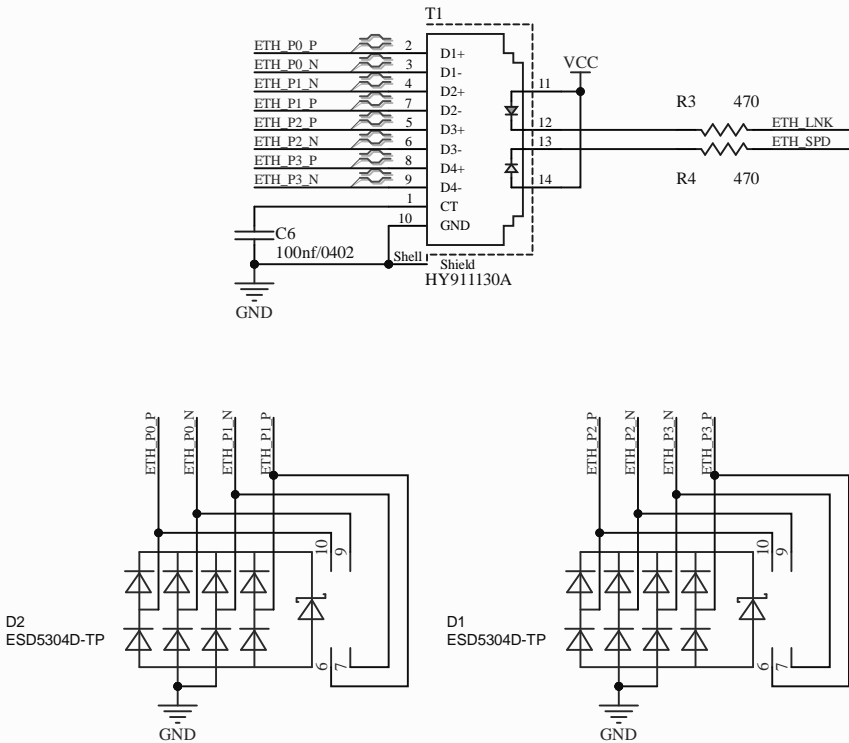
USB



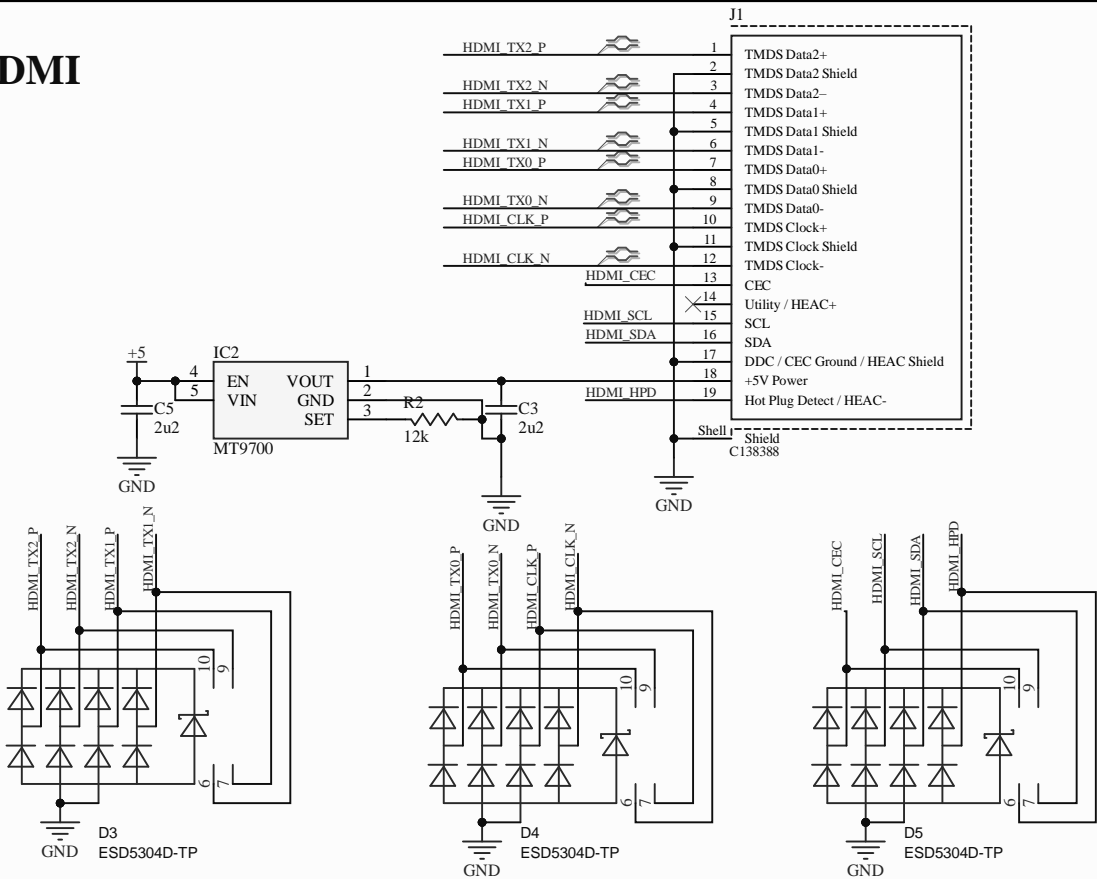
I²C



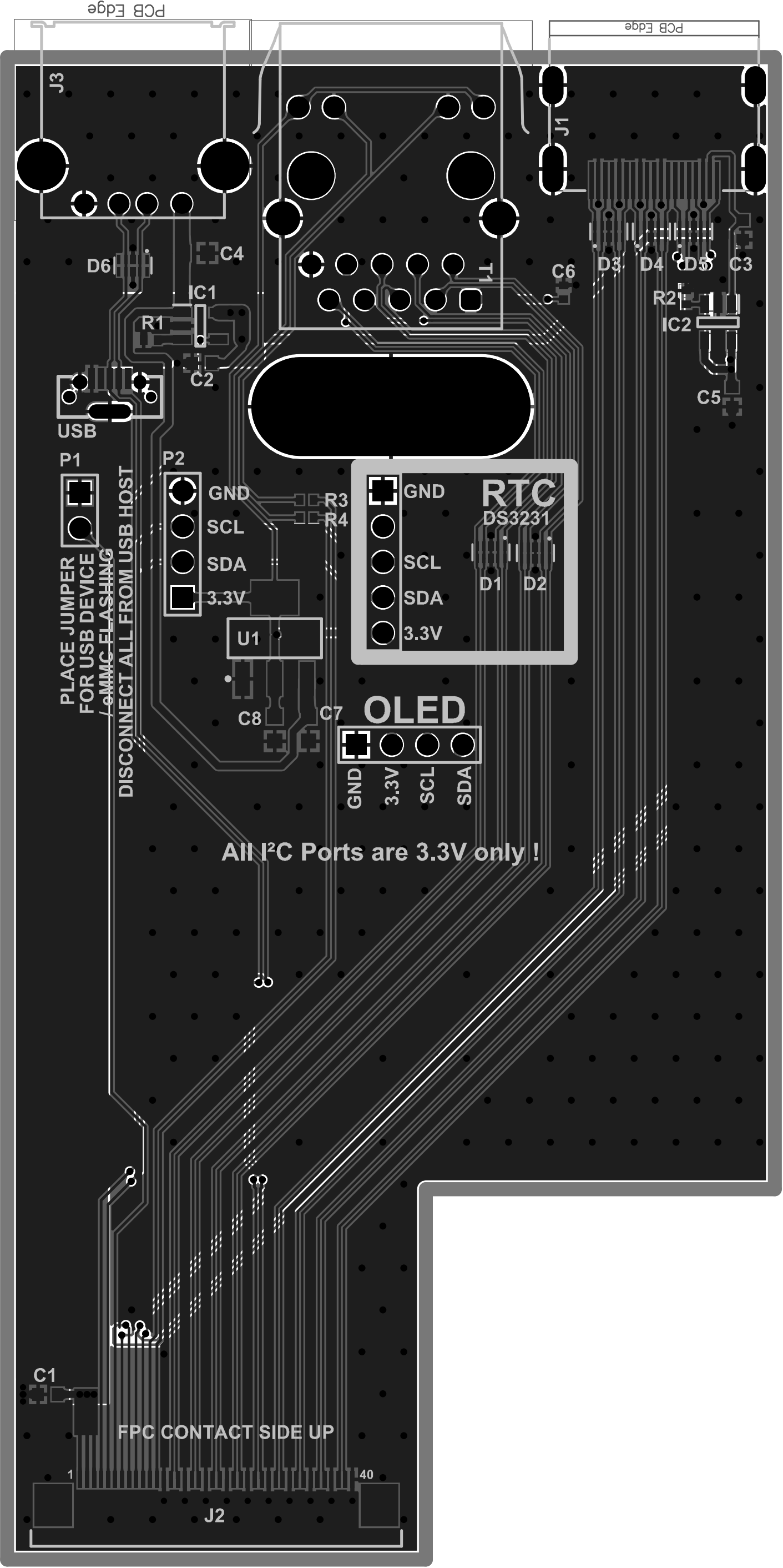
Ethernet



HDMI



Title		
Size	Number	Revision
A3		
Date:	11.13.2021	Sheet of
File:	H:\Electronic\...\PiStorm32_IO_RevB.Sch	Drawn By:



PCB Edge

PCB Edge

J3

J1

D6

C4

IC1

R1

C2

USB

P1

PLACE JUMPER
FOR USB DEVICE
/ eMMC FLASHING

DISCONNECT ALL FROM USB HOST

P2

GND

SCL

SDA

3.3V

U1

C8

C7

OLED

GND

3.3V

SCL

SDA

All I²C Ports are 3.3V only !

GND

SCL

SDA

3.3V

RTC

DS3231

D1

D2

C1

FPC CONTACT SIDE UP

1

40

J2